

ROTOVAC



CFX-27 GALLON PORTABLE EXTRACTOR

Owner's Manual

CFX 1/22/2010

Overview

The Rotovac CFX-27 has an extra large 27 gallon clean water holding tank and an automatic waste water pump out system. In addition, the “**Power Pod**” portion of the CFX is easily removable from the 27 gallon tank for direct faucet hook up operation. In this mode, the **Power Pod** utilizes a solution hose that attaches to any faucet for unlimited incoming clean water supply while automatically pumping out the recovered waste water to any toilet or drain as you clean. The **Power Pod** allows for **unlimited flow** extraction cleaning and completely eliminates the task of filling and emptying with buckets.

Operator’s responsibility

Proper operation and maintenance are vital in the performance of the **CFX-27**. It is therefore extremely important that the training video is watched and this operations manual is read and understood completely before operating the **CFX-27**. The training video is available online at www.rotovac.com

CALL BEFORE USING FOR THE FIRST TIME !

Before using the **CFX-27** for the first time, read the owners manual, watch the training video, write down any questions that you may have and then call Rotovac toll-free for valuable tips and pointers at **1-888-768-6822. (8:00 a.m. to 5:00 p.m. Monday - Friday P.S.T.)** Training video is available on line at: www.rotovac.com

Understand the System

Understanding exactly how the empty pump system works is the single most important subject for the trouble free operation of the **CFX-27**. The empty pump is turned on and off by the float switch located at the base of the float switch tube (Fig B). As the water starts to fill the recovery tank, the float switch slides up and turns on the empty pump. When the water level in the tank goes down the float switch slides down and turns off the empty pump. It is important that the float switch slides up and down freely or the pump may be stuck in the on, or stuck in the off mode. Remove float switch cover to inspect and keep float switch clean and free of debris (Fig B). The empty pump screen filter at the end of the empty pump hose must be kept clean and must rest on the very bottom of the recovery tank for proper operation (Fig B). **Do not allow the empty pump to run “DRY” without some sort of foam or water going through it for more than a few seconds or the impeller may seize and need service (Page 7)**

Recommended cleaning procedure:

Pre-Spray:

Using an in line sprayer or a garden style pump-up sprayer, pre-spray the carpet to be cleaned with a non foaming “extraction” style cleaning detergent. Do not use a foaming “shampoo” style detergent as this could cause over foaming in the recovery tank. Apply extra to heavily soiled areas and less on the lightly soiled areas. Pre-spray approximately 200 sq feet at a time to allow for some “dwell time” for the cleaning detergent to loosen the soil. Now when you start cleaning the carpet with the CFX, the “**high flow**” clear water rinsing action removes the soil and the detergent from the carpet fiber leaving it residue free which means the carpet will feel softer and fluffier and will stay cleaner longer.

Controls

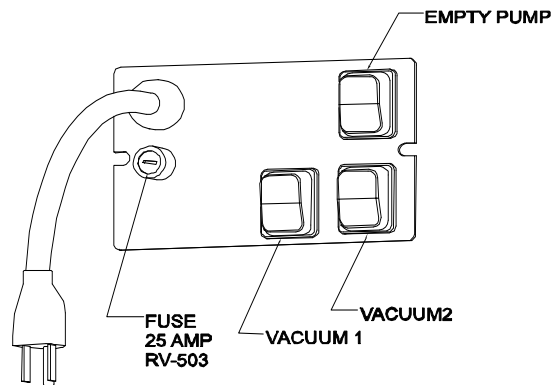


FIGURE A

Operation

After you have attached your clean water solution hose to a water source and secured your empty hose into a toilet or drain, proceed as follows;

- 1) Turn on the empty pump switch only (not vacuum switches)
- 2) Connect the clean water solution hose female to the male quick connect on the front of the CFX.
- 3) The recovery tank should start to fill with water. Before the water reaches the bottom of the porthole window, the empty pump should turn on and off indicating proper operation of the float switch and the pump. If the empty pump is not functioning properly see pump troubleshooting on page 9.
- 4) After confirming the empty pump is functioning properly, disconnect the solution hose from the front of the CFX and attach to your cleaning tool. Leave the empty pump switch on, turn on both vacuum motors and start cleaning. The empty pump should continually turn on and off as the dirty water enters and exits the recovery tank. As you are cleaning you should visually monitor the clear empty hose to confirm that the empty pump is intermittently turning on and off and functioning properly.

Maintenance

Keep recovery tank clean so that carpet lint does not build up and cause empty pump float switch to get stuck. Always make sure that the empty pump screen filter on the end of the hose is clean and resting at the **very bottom** of the recovery tank to prevent it from pumping air instead of water (Fig B). Remove filter bag to unscrew and clean out the diffuser tube in the recovery tank as needed (Fig C). When replacing the diffuser tube make sure the 6 outlet holes are facing to the sides of the recovery tank (Fig C). Make sure float switch is clean and free to move up and down (Fig B). When replacing upper housing onto the lower housing, make sure the empty pump screen filter feeds down to the **very bottom of the tank** on the right side of the diffuser tube. Switches face to the back of the CFX and the vacuum hose barb faces to the front.

Note: Always make sure your dirty water empty hose does not fall out of the drain or toilet by running hose under toilet seat or securing to faucet. Also check to make sure your clean water hose connection at the faucet is not leaking. Draping a small towel over the faucet will help contain any small leak you may encounter.

Precautions

- Make sure the float switch is free to move up and down to activate the empty pump (Fig B)
- Make sure the empty pump screen filter on the end of the hose is resting on the **very bottom** of the recovery tank (Fig B)
- Make sure your diffuser tube in the recovery tank is screwed in with the 6 holes facing the sides for proper separation of air and water (Fig C). If the diffuser tube is not properly aligned, water may get sucked up into the vacuum motors and shoot out the side exhausts. Clean out the diffuser tube and recovery tank periodically as needed.
- If water does get sucked up into vacuum motors, run the vacuum motors for about two minutes to dry out before storing.
- Keep all vacuum and pump screen filters clean for maximum performance.
- When doing various tasks such as flood extraction, be careful not to suck up more water than the empty pump can keep up with or the vacuum motors will suck up water and shoot it out the side exhausts. Pumps up to 6 gpm.
- Always use a grounded 3 prong electrical outlet and wear rubber soled shoes when operating.
- Store in a dry place, do not allow electrical components to get wet.
- Only trained personnel who have read this manual and understand completely the information herein should operate the ***CFX***.

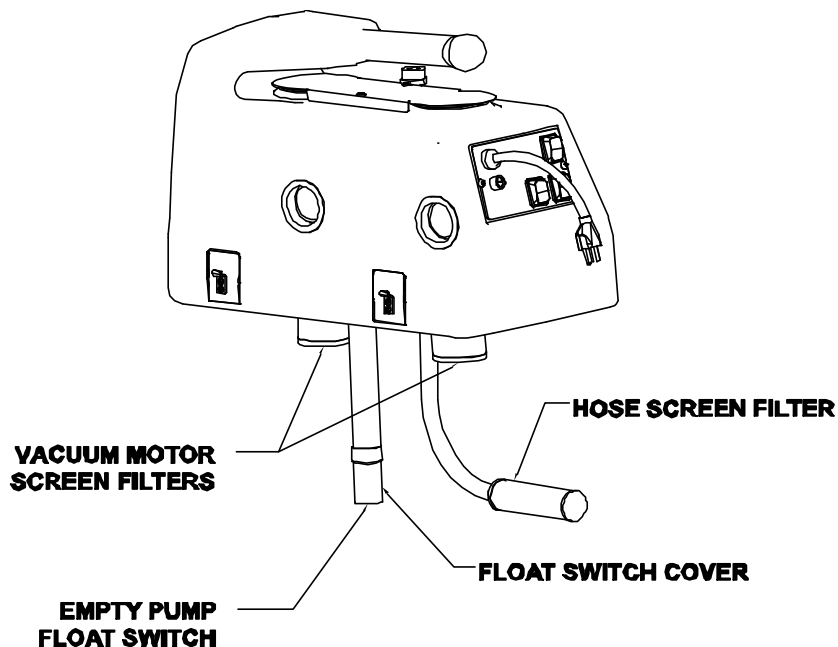


FIGURE B

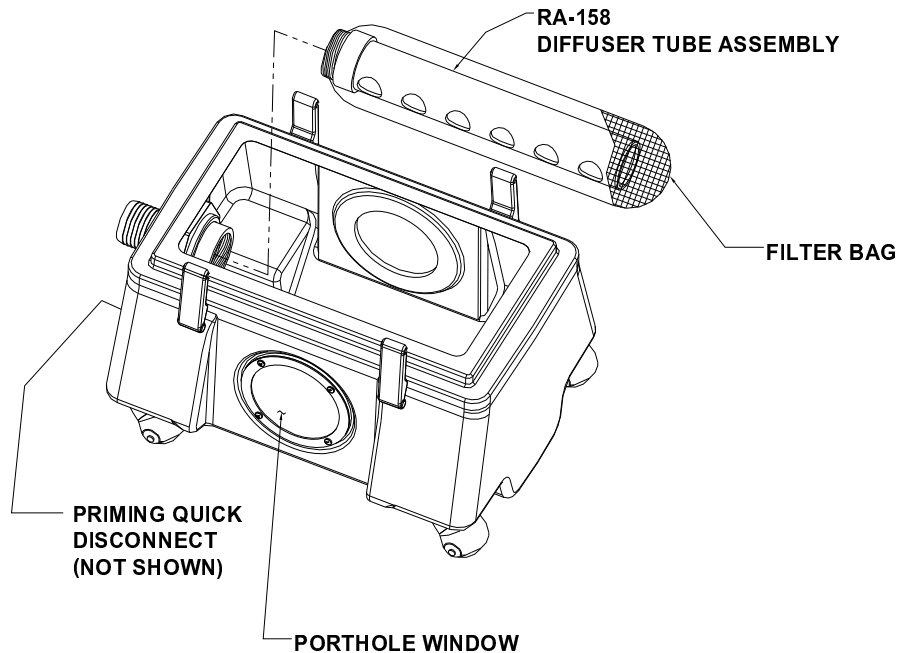


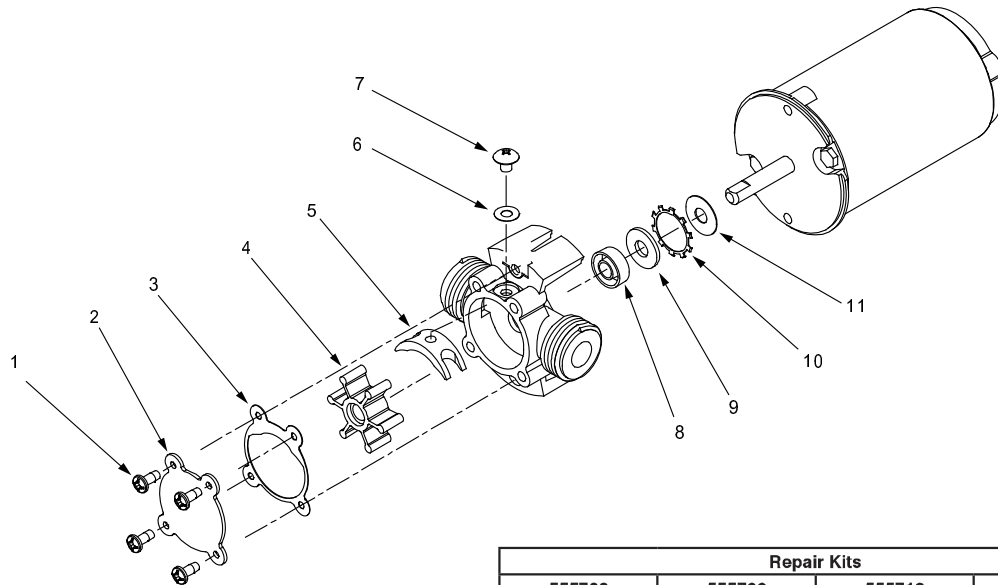
FIGURE C

Empty Pump Repair

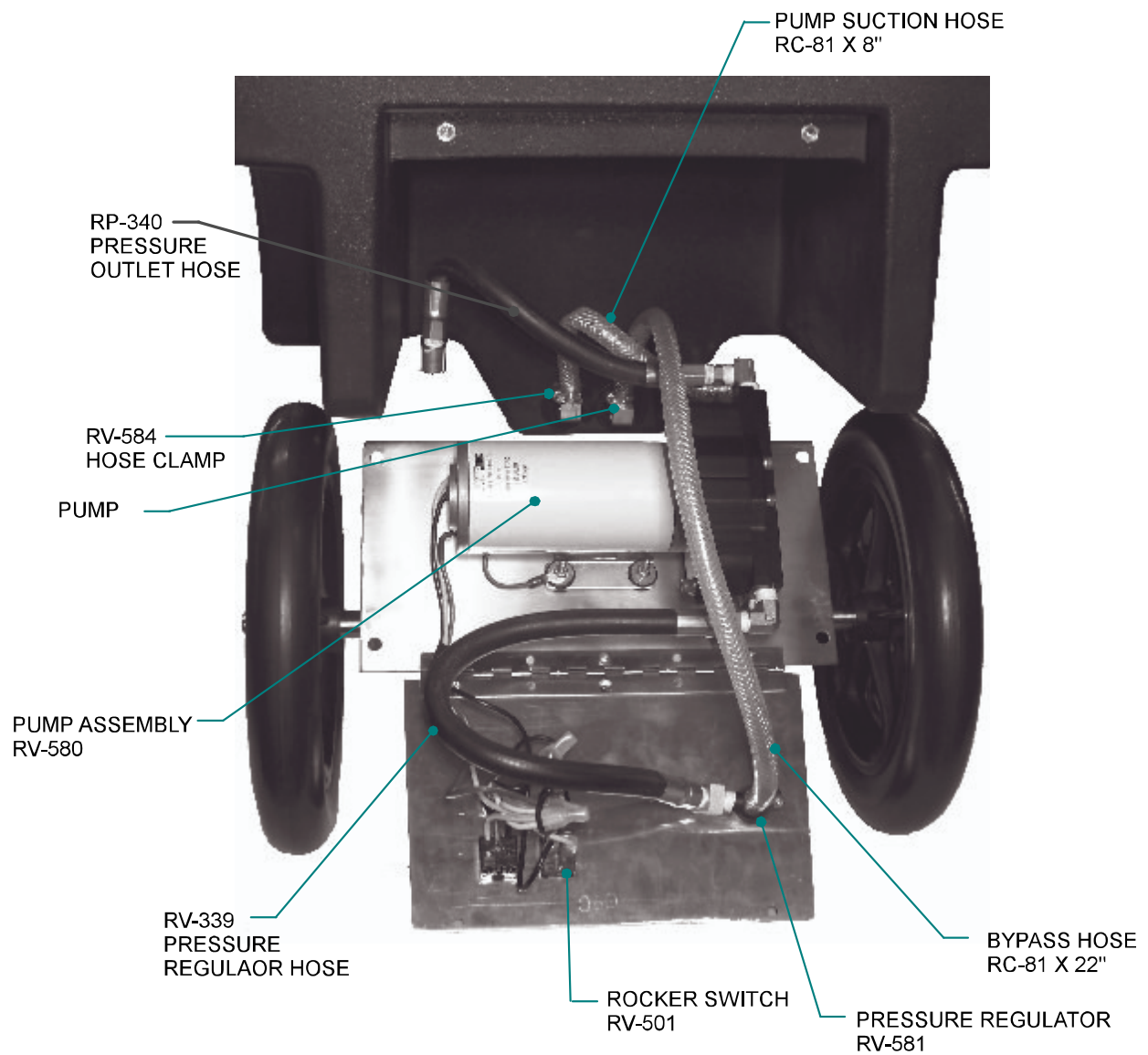
TO REPLACE IMPELLER: Replace impeller when it has become worn or damaged.

- a. Remove cover plate mounting screws.
- b. Remove cover plate and cover plate gasket.
- c. Slide damaged or worn impeller off motor shaft.
- d. Clean the inside of the pump head and the cover gasket sealing surface. Make certain that there are no foreign materials that would obstruct the impeller's operation.
- e. Apply petroleum jelly or similar lubricant to the inside of the pump head and the outside diameter of the impeller.
- f. Align the flat on the inside of the impeller shaft bore with the flat on the motor shaft. Push the impeller into place, while twisting the impeller vanes in a clockwise rotation.
- g. Place new gasket on pump head face, align holes and replace cover.
- h. Tighten cover plate mounting screws evenly and snugly.

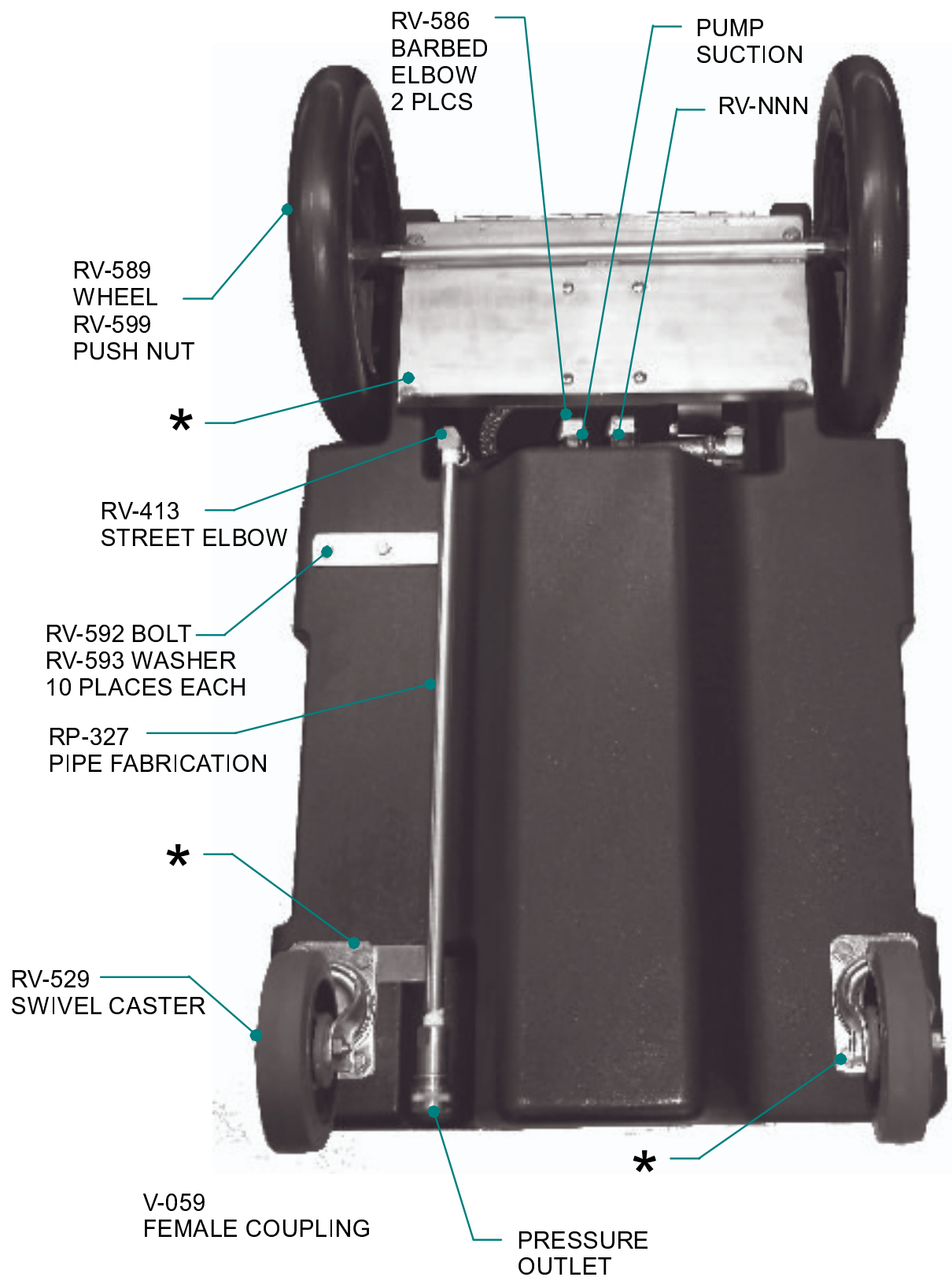
NOTE: The pump will still work even with a couple of impeller blades broken.



| | | Repair Kits | | | |
|----------|---------------------------------|--------------------|-------------------|--------------------|---------------------|
| | | 555702 HRK-360S | 555706 IRK-360 | 555713 IRK-360S | 555714 ISRK-360S |
| Item No. | Description | Component Quantity | | | |
| 1 | Screw, volute cover | 4 | -- | -- | -- |
| 2 | Volute cover, SST | 1 | -- | -- | -- |
| 3 | Cover gasket, Nitrile | 2222 | | | |
| 4 | Impeller, Buna-N w/SST insert | 2 | -- | 2 | 2 |
| 4 | Impeller, Buna-N w/brass insert | -- | 2 | -- | -- |
| 5 | Cam, SST | 1 | -- | -- | -- |
| 6 | Gasket, fiber washer, cam screw | 1 | -- | -- | -- |
| 7 | Screw, cam | 1 | --- | -- | -- |
| 8 | U-cup seal, Viton | -- | -- | -- | 1 |
| 9 | Felt washer | -- | -- | -- | 1 |
| 10 | Internal retaining ring | -- | -- | -- | 1 |
| 11 | Slinger washer, neoprene | -- | -- | -- | 1 |



DOCKING STATION PLUMBING



DOCKING STATION BOTTOM VIEW

CFX TROUBLE SHOOTING GUIDE

1. Empty Pump not working:

Unscrew empty hose from top fitting and pour a little water into pump from top fitting (Fig B). The water should lubricate the rubber impeller to get the empty pump working on next attempt. Check to make sure float switch is working and is not impaired by any debris (Fig B). If still not working, the impeller may have a broken fin and need service (page 8) Remove pump cover plate and visually inspect black rubber impeller (Fig B opposite side) If one of the six fins is broken, remove the broken fin and the pump should still work - or replace the entire impeller with a new one (page 8). Do not allow empty pump to run dry for more than a few seconds or the impeller could overheat and get stuck. Look in through the side porthole to make sure the empty pump hose screen filter is resting on the very bottom of the recovery tank so it does not suck air instead of water when the pump switch activates (Fig B). Check to make sure the float switch moves freely up and down (Fig B)

2. Vacuum motor not working:

Check switch connections.

3. Nothing working:

Check cord and outlet for power.

4. Other problems:

Call our service department toll free at (888)768-6822 between the hours of 8:00am and 5:00pm (pst) Monday-Friday

WARRANTY

Rotovac Corporation products are warranted to be free of defects in material for 1 year as noted below:

During this warranty period, we will repair or replace, at our sole option, free of charge, any parts shown to be defective in either material or workmanship. Said parts must be returned with postage or freight pre-paid. Specific parts, such as switches, vacuum motors, pumps, fittings, etc., are also warranted for a period of 1 year from date of original purchase.

This warranty is for replacement of defective parts or workmanship only. IT DOES NOT PROVIDE FOR REPLACEMENT OF COMPLETE UNITS DUE TO DEFECTIVE PARTS. It does NOT cover normal wear items such as hoses, power cords, bumpers, carbon brushes, gaskets, etc., which require replacement as a result of ordinary usage. Also, failures caused by abuse, neglect, alterations or operation contrary to manufacturer's recommendations are not warranted.

Replacement parts are warranted only for the remainder of the original warranty period.

This warranty does not cover labor or other charges in connection with replacement parts. NO LOCAL SERVICE OR REPAIR CHARGES ARE ALLOWED UNLESS PRIOR AUTHORIZATION IS OBTAINED.

There are no other warranties, expressed or implied, made with respect to this equipment. The manufacturer assumes no responsibility for damages resulting from the use or misuse of this equipment. NOTE: This warranty is not transferable.

Rotovac Corporation

**17905 Bothell Everett Hwy
Mill Creek, Washington 98012
Toll Free (888)768-6822 Fax (425) 883-8953
<http://www.Rotovac.com>**